

# It's Open Enrollment. What do I need to do?



Open Enrollment is **your one opportunity** every year to choose a new health plan. It's your chance to get the right care at the right price for you.



**But if you're happy with your current plan**, you don't need to enroll. Keep paying your premiums (if you have them) and you're good to go.



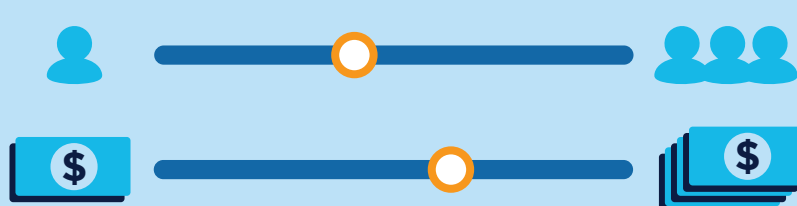
**Nov. 1—Dec. 23**  
For coverage starting January 1, you have until December 23 to sign up and pay your first month's premium.

## Where do I start?

First, log on to the **Health Connector**



**Then, update your application** by reporting any changes to your income, family size or more.



Option A	=====	\$\$\$	☑
Option B	=====	\$\$	○
Option C	=====	\$	○

**After that**, you'll see what health plans and financial aid you qualify for.

Choose the option that's best for you.

## The options can be overwhelming. Here's a few things to keep in mind.



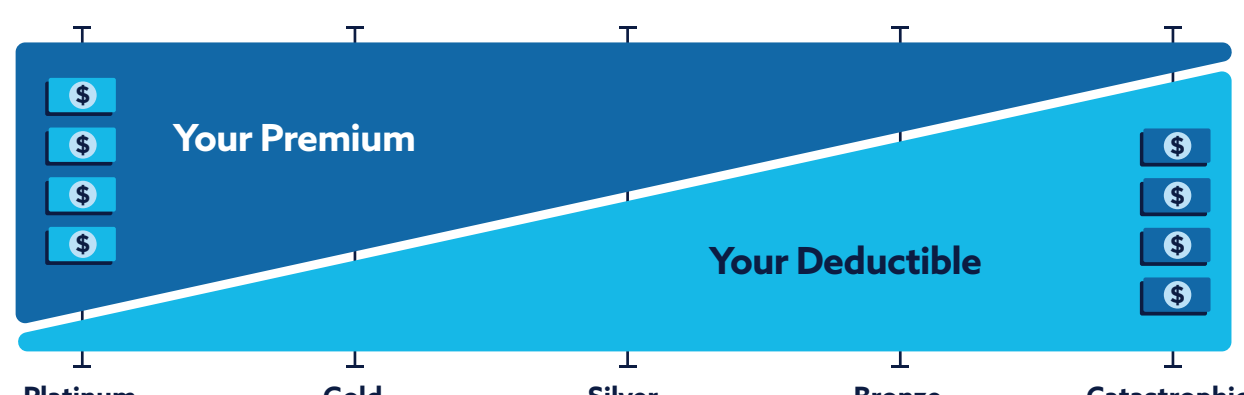
### How Often You Need Care

**If you often need care or have ongoing treatment**, look for a plan with a lower deductible. That means you generally pay less when you go to the doctor.

**Examples: Platinum or Gold plans**

**If you just need basic care services occasionally**, like an annual check-up, try to find an option with lower premiums. That way you'll generally pay less on your monthly bill.

**Examples: Bronze or Silver plans**



### Your Doctors

Some physicians and specialists are in the Tufts Health Direct network. Others aren't.



It's important to make sure that the doctors you see are in your network so you don't get charged extra.

Use our **doctor search tool** to find in-network providers.



### Your Budget

Think about your income and look for options that give you the most without breaking the bank. If you qualify for a ConnectorCare plan, your monthly premium may be as low as \$0!

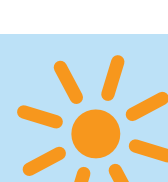


## I'm Enrolled! Now What?

**Make sure you pay your first month's premium** (if you have one) through the Connector.

Life is busy. You have a lot to keep track of. We get it. If you enroll with us, we reach out. We make getting started easy.

## Tufts Health Direct puts all the important pieces together.



**Your ID card**



**Your benefit and cost information**



**Your doctor search tool**



**You can access everything, any time, through the Tufts Health Plan app.**

Download the app today through Google Play Store or Apple Store.

