

# REWARD MEMBERS FOR SMART SHOPPING



Did you know that the cost of a common MRI can range from \$522 to \$1,970 in Massachusetts depending on where members go?<sup>1</sup> The price of health care varies widely throughout New England, so it pays to shop around.

Welcome to **MyRewards from Tufts Health Plan**, where members can get rewarded for choosing high-quality, lower-cost providers and services starting early next year.<sup>2</sup>

## THEY CAN EARN UP TO \$500 PER YEAR

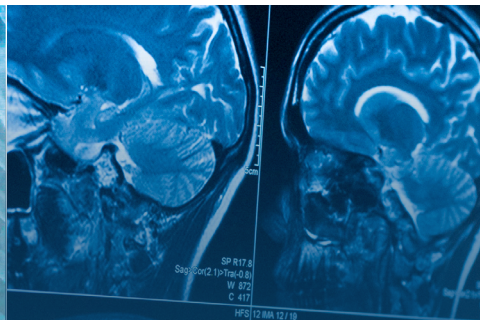
Once members opt in, they can save money and earn money as they shop for coverage of health care services—like mammograms, colonoscopies and MRIs. They can pick a rewardable service and earn a gift card worth \$50-\$100.<sup>3</sup>

## IT'S EASY TO GET STARTED



### Costs vary widely

Some providers can charge a higher price for the exact same service. The cost can be 2x - 3x or more!



### Shop and save

Need an MRI but don't know where to go? Members just look for the provider with the green trophy icon, which means high-value care for a great price.<sup>4</sup>

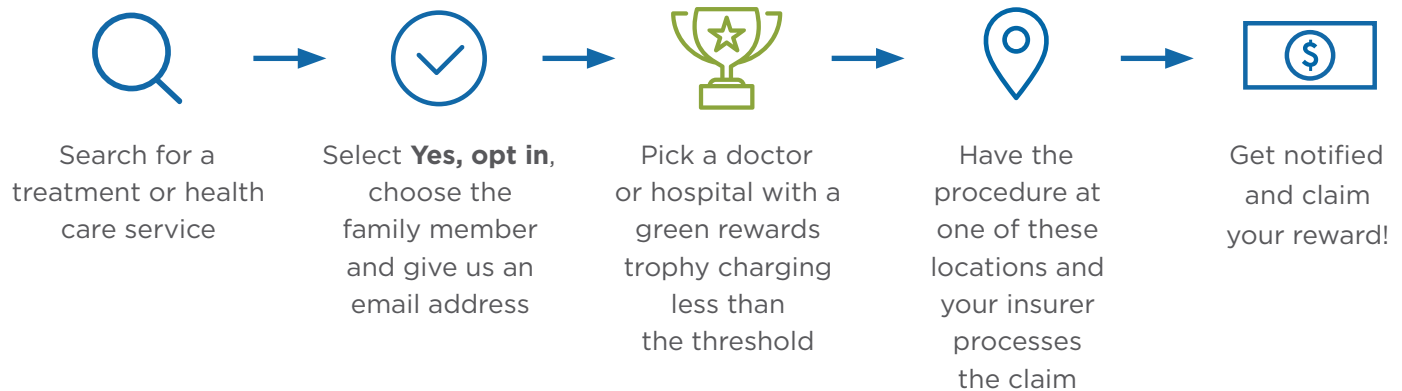


### Cash in and smile!

Members save money on their service AND get rewarded for it.

## HOW MYREWARDS WORKS

MyRewards is fully integrated with our Provider Search + Treatment Cost Estimator tool. It's all within the Member Portal at [mytuftshealthplan.com](https://mytuftshealthplan.com). Members don't have to login to a different website or call a separate phone number – everything they need is right there. It's that simple!



## EXAMPLES OF REWARDABLE SERVICES

- Bariatric surgery
- Carpal tunnel surgery
- Colonoscopy/endoscopy
- Echocardiogram
- High-tech imaging (MRI, CT scan, PET scan)
- Hip replacement/knee replacement
- Mammogram
- Maternity

## WHY OFFER MYREWARDS?

MyRewards pays off for employers and members alike. The program helps employers manage medical costs by incentivizing members. And members can save and earn money for smart shopping.

To learn more about MyRewards, contact your sales representative today.

<sup>1</sup> CompareCare — [masscompare.gov](https://masscompare.gov), 2018

<sup>2</sup> MyRewards will be available to Commercial fully-insured members in Massachusetts and Rhode Island. Buy-up options will be available for Commercial self-insured employers in Massachusetts and Rhode Island. MyRewards will not be available with tiered products or CareLink.

<sup>3</sup> Up to \$500 in rewards per year for each covered member. Reward amounts for members of self-insured employer groups may vary.

<sup>4</sup> Depending on your plan, you may need to check with your primary care provider to see if you need a referral or pre-authorization for your procedure.

