

Sources of Disease Management Program Member Identification:

- Claims: Medical, Behavioral Health, and Pharmacy
- Centralized Enrollee Record: Comprehensive Assessment (Health Risk Assessment), MDS-HC
- Internal Referrals: SCO Care Management
- Primary Care Provider Referrals

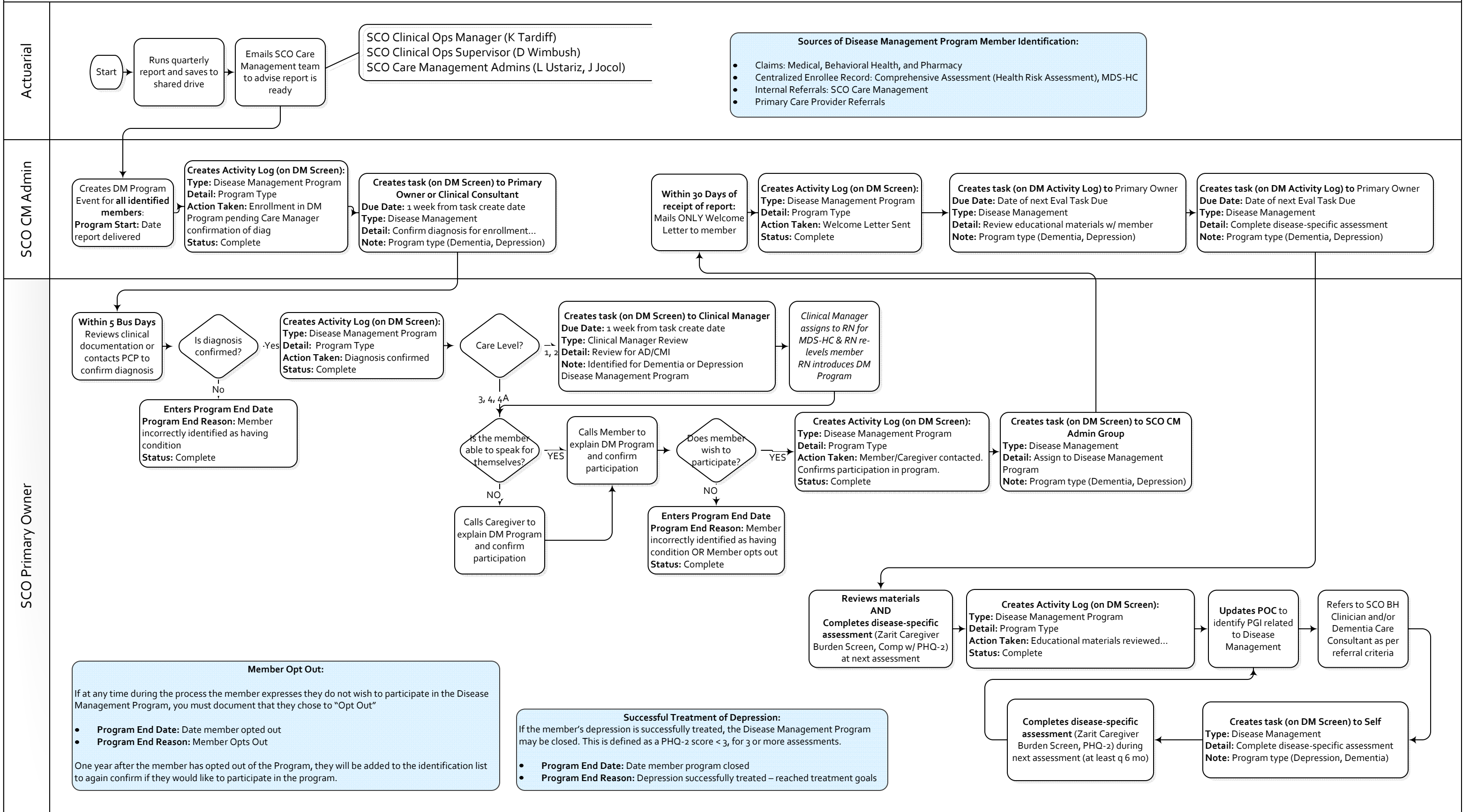
Member Opt Out:

If at any time during the process the member expresses they do not wish to participate in the Disease Management Program, you must document that they chose to "Opt Out"

- **Program End Date:** Date member opted out
- **Program End Reason:** Member Opts Out

One year after the member has opted out of the Program, they will be added to the identification list to again confirm if they would like to participate in the program.

Disease Management Program Workflow: Depression, Dementia



Member Opt Out:

If at any time during the process the member expresses they do not wish to participate in the Disease Management Program, you must document that they chose to "Opt Out"

- **Program End Date:** Date member opted out
- **Program End Reason:** Member Opts Out

One year after the member has opted out of the Program, they will be added to the identification list to again confirm if they would like to participate in the program.

Successful Treatment of Depression:

If the member's depression is successfully treated, the Disease Management Program may be closed. This is defined as a PHQ-2 score < 3, for 3 or more assessments.

- **Program End Date:** Date member program closed
- **Program End Reason:** Depression successfully treated – reached treatment goals